

Cylinders

R6



R6

The R6 reversible flat key cylinder, with a standard security level, protects you against external attacks thanks to reliable solutions in the cylinder body.



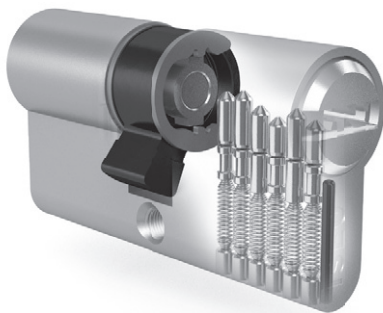
Design and certification

According to the European standard EN 1303:2015.

The R6 cylinder is certified to a standard security level. Specific solutions inside the cylinder body protects you against undesired attacks.

SKG Certification (option)

The R6 cylinder is also available with **SKG** certification.



Technical features

Attack resistance

- Grade 0/Grade D*
- Standard security level: locking system with 6 stainless steel pins.
- Resistance to picking thanks to brass mushroom-shaped driver pins.
- Drilling resistance thanks to inserts positioned on both sides of the cylinder body.

Key related security

- Grade 5: min. 30.000 key combinations.
- Reversible nickel-plated brass keys.
- Code Card, to get a high quality duplicate.
- Numbering code on the neck of the key.

* **R6**: standard version with grade "0";
anti-drill version with grade D on request



R6

Code

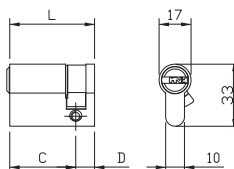
Single
package

Multiple
package



R6 European SINGLE-PROFILE cylinder. Nickel-plated brass flat key with 6 pins. Anti-drill device in the cylinder body. 8-position DIN cam.

5 KEYS. CODE CARD. Fixing screw. (Key blank code: 020839).



L	C + D	MATERIAL		1	5	5
		BRASS	NICKEL			
Length mm 40	(30+10)	880930107..5	880930109..5	1	5	5
Length mm 45	(35+10)	880935107..5	880935109..5	1	5	5
Length mm 50	(40+10)	880940107..5	880940109..5	1	5	5
Length mm 60	(50+10)	880950107..5	880950109..5	1	5	5
Length mm 65	(55+10)	880955107..5	880955109..5	1	5	5
Length mm 70	(60+10)	880960107..5	880960109..5	1	5	5
Length mm 75	(65+10)	880965107..5	880965109..5	1	5	5
Length mm 80	(70+10)	880970107..5	880970109..5	1	5	5
Length mm 90	(80+10)	880980107..5	880980109..5	1	5	5
Length mm 100	(90+10)	880990107..5	880990109..5	1	-	1

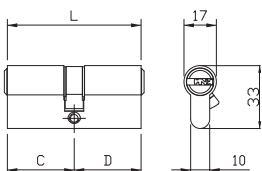


R6

Code

Single
Multiple
package

Min. ord.



R6 European DOUBLE-PROFILE cylinder. Nickel-plated brass flat key with 6 pins. Anti-drill device in the cylinder body. 30°DIN cam.

5 KEYS. CODE CARD. Fixing screw. (Key blank code: 020839).



L	C + D	MATERIAL		Single package	Multiple package	Min. ord.
		BRASS	NICKEL			
Length mm 56	(28+28)	880928287..5	880928289..5	1	5	5
Length mm 61	(28+33)	880928337..5	880928339..5	1	5	5
Length mm 60	(30+30)	880930307..5	880930309..5	1	5	5
Length mm 65	(30+35)	880930357..5	880930359..5	1	5	5
Length mm 70	(30+40)	880930407..5	880930409..5	1	5	5
	(35+35)	880935357..5	880935359..5	1	5	5
Length mm 75	(30+45)	880930457..5	880930459..5	1	5	5
	(35+40)	880935407..5	880935409..5	1	5	5
Length mm 80	(30+50)	880930507..5	880930509..5	1	5	5
	(35+45)	880935457..5	880935459..5	1	5	5
	(40+40)	880940407..5	880940409..5	1	5	5
Length mm 85	(30+55)	880930557..5	880930559..5	1	5	5
	(35+50)	880935507..5	880935509..5	1	5	5
	(40+45)	880940457..5	880940459..5	1	5	5
Length mm 90	(30+60)	880930607..5	880930609..5	1	5	5
	(40+50)	880940507..5	880940509..5	1	5	5
	(45+45)	880945457..5	880945459..5	1	5	5
Length mm 95	(30+65)	880930657..5	880930659..5	1	-	1
	(40+55)	880940557..5	880940559..5	1	-	1
Length mm 100	(30+70)	880930707..5	880930709..5	1	-	1
	(35+65)	880935657..5	880935659..5	1	-	1
	(40+60)	880940607..5	880940609..5	1	-	1
	(50+50)	880950507..5	880950509..5	1	-	1
Length mm 105	(30+75)	880930757..5	880930759..5	1	-	1
	(50+55)	880950557..5	880950559..5	1	-	1
Length mm 110	(30+80)	880930807..5	880930809..5	1	-	1
	(50+60)	880950607..5	880950609..5	1	-	1
Length mm 120	(65+55)	880965557..5	880965559..5	1	-	1



R6

Code

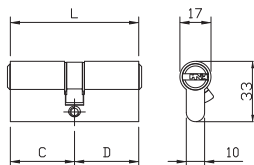
Single
package

Multiple
package



R6 European DOUBLE-PROFILE cylinder. Nickel-plated brass flat key with 6 pins. **DOUBLE FUNCTION**, also operates when keyed-in. Anti-drill device in the cylinder body. 30° DIN cam.

5 KEYS. CODE CARD. Fixing screw. (Key blank code: 020839).



L	C + D	BRASS		NICKEL		
		Code	Code	Single	Multiple	Min. ord.
Length mm 60	(30+30)	889930307..5	889930309..5	1	5	5
Length mm 65	(30+35)	889930357..5	889930359..5	1	5	5
Length mm 70	(30+40)	889930407..5	889930409..5	1	5	5
	(35+35)	889935357..5	889935359..5	1	5	5
Length mm 75	(30+45)	889930457..5	889930459..5	1	5	5
	(35+40)	889935407..5	889935409..5	1	5	5
Length mm 80	(30+50)	889930507..5	889930509..5	1	5	5
	(35+45)	889935457..5	889935459..5	1	5	5
	(40+40)	889940407..5	889940409..5	1	5	5
Length mm 85	(30+55)	889930557..5	889930559..5	1	5	5
	(35+50)	889935507..5	889935509..5	1	5	5
	(40+45)	889940457..5	889940459..5	1	5	5
Length mm 90	(30+60)	-	889930609..5	1	5	5
	(40+50)	889940507..5	889940509..5	1	5	5
	(45+45)	889945457..5	889945459..5	1	5	5
Length mm 95	(30+65)	889930657..5	889930659..5	1	-	1
	(40+55)	889940557..5	889940559..5	1	-	1
Length mm 100	(30+70)	889930707..5	889930709..5	1	-	1
	(40+60)	889940607..5	889940609..5	1	-	1
	(50+50)	889950507..5	889950509..5	1	-	1
Length mm 105	(30+75)	889930757..5	889930759..5	1	-	1
Length mm 110	(30+80)	889930807..5	889930809..5	1	-	1
	(50+60)	889950607..5	889950609..5	1	-	1



R6

Code

Single
package

Multiple
package

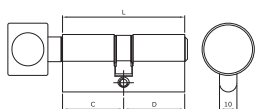
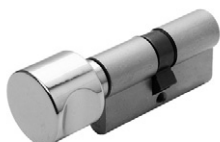
Min. ord.

R6 EUROPEAN PROFILE cylinder with internal ROUND KNOB.

Nickel-plated brass flat key with 6 pins.

Anti-drill device in the cylinder body 30° DIN cam.

5 KEYS. CODE CARD. Fixing screw. (Key blank code: 020839).



Length mm	L	C + D	Code		Single package	Multiple package	Min. ord.
			BRASS	NICKEL			
56	(knob 28+28)		888928287..5	888928289..5	1	5	5
60	(knob 30+30)		888930307..5	888930309..5	1	5	5
61	(knob 28+33)		888928337..5	888928339..5	1	5	5
65	(knob 30+35)		888930357..5	888930359..5	1	5	5
70	(knob 30+40)		888930407..5	888930409..5	1	5	5
	(knob 35+35)		888935357..5	888935359..5	1	5	5
75	(knob 30+45)		-	888930459..5	1	5	5
	(knob 35+40)		888935407..5	888935409..5	1	5	5
80	(knob 30+50)		888930507..5	888930509..5	1	5	5
	(knob 35+45)		888935457..5	888935459..5	1	5	5
	(knob 40+40)		888940407..5	888940409..5	1	5	5
85	(knob 30+55)		888930557..5	888930559..5	1	5	5
	(knob 35+50)		888935507..5	888935509..5	1	5	5
	(knob 40+45)		-	888940459..5	1	5	5
90	(knob 30+60)		888930607..5	888930609..5	1	5	5
	(knob 35+55)		888935557..5	888935559..5	1	5	5
	(knob 40+50)		888940507..5	888940509..5	1	5	5
	(knob 45+45)		888945457..5	888945459..5	1	5	5
95	(knob 30+65)		888930657..5	888930659..5	1	-	1
	(knob 35+60)		888935607..5	888935609..5	1	-	1
	(knob 40+55)		888940557..5	888940559..5	1	-	1
	(knob 45+50)		888945507..5	888945509..5	1	-	1
100	(knob 30+70)		888930707..5	888930709..5	1	-	1
	(knob 35+65)		888935657..5	888935659..5	1	-	1
	(knob 40+60)		888940607..5	888940609..5	1	-	1
	(knob 45+55)		888945557..5	888945559..5	1	-	1
	(knob 50+50)		888950507..5	888950509..5	1	-	1
105	(knob 30+75)		888930757..5	888930759..5	1	-	1
	(knob 35+70)		-	888935709..5	1	-	1
	(knob 40+65)		888940657..5	888940659..5	1	-	1
	(knob 45+60)		888945607..5	888945609..5	1	-	1
	(knob 50+55)		888950557..5	888950559..5	1	-	1
110	(knob 30+80)		888930807..5	888930809..5	1	-	1
	(knob 35+75)		888935757..5	888935759..5	1	-	1
	(knob 40+70)		888940707..5	888940709..5	1	-	1
	(knob 45+65)		888945657..5	888945659..5	1	-	1
	(knob 50+60)		888950607..5	888950609..5	1	-	1
	(knob 55+55)		888955557..5	888955559..5	1	-	1

**R6**

Code

Single
packageMultiple
package

Min. ord.



L	C + D					
		BRASS	NICKEL			
Length mm 115 (knob 30+85)		888930857..5	888930859..5	1	-	1
	(knob 35+80)	888935807..5	888935809..5	1	-	1
	(knob 40+75)	888940757..5	888940759..5	1	-	1
	(knob 45+70)	888945707..5	888945709..5	1	-	1
	(knob 50+65)	888950657..5	888950659..5	1	-	1
	(knob 55+60)	888955607..5	888955609..5	1	-	1
Length mm 120 (knob 30+90)		888930907..5	888930909..5	1	-	1
	(knob 35+85)	888935857..5	888935859..5	1	-	1
	(knob 40+80)	888940807..5	888940809..5	1	-	1
	(knob 50+70)	888950707..5	888950709..5	1	-	1
	(knob 55+65)	888955657..5	888955659..5	1	-	1
	(knob 60+60)	888960607..5	888960609..5	1	-	1
Length mm 125 (knob 35+90)		888935907..5	888935909..5	1	-	1
	(knob 40+85)	888940857..5	888940859..5	1	-	1
	(knob 45+80)	888945807..5	888945809..5	1	-	1
	(knob 50+75)	888950757..5	888950759..5	1	-	1
	(knob 55+70)	888955707..5	888955709..5	1	-	1
	(knob 60+65)	888960657..5	888960659..5	1	-	1
Length mm 130 (knob 40+90)		888940907..5	888940909..5	1	-	1
	(knob 45+85)	888945857..5	888945859..5	1	-	1
	(knob 50+80)	888950807..5	888950809..5	1	-	1
	(knob 55+75)	888955757..5	888955759..5	1	-	1

**R6**

Code

Single
packageMultiple
package

Min. ord.



R6 EUROPEAN PROFILE cylinder with internal FLAT KNOB.

Nickel-plated brass flat key with 6 pins.

Anti-drill device in the cylinder body. 30°DIN cam.

5 KEYS. CODE CARD. Fixing screw. (Key blank code: 020839).

L	C + D	BRASS		NICKEL		
		Code	Code	Min. ord.	Multiple package	Single package
Length mm 56	(Knob 28+28)	885928287..5	885928289..5	1	5	5
Length mm 60	(Knob 30+30)	885930307..5	885930309..5	1	5	5
Length mm 61	(Knob 28+33)	885928337..5	885928339..5	1	5	5
	(Knob 33+28)	885933287..5	885933289..5	1	5	5
Length mm 65	(Knob 30+35)	885930357..5	885930359..5	1	5	5
	(Knob 35+30)	885935307..5	885935309..5	1	5	5
Length mm 70	(Knob 30+40)	885930407..5	885930409..5	1	5	5
	(Knob 35+35)	885935357..5	885935359..5	1	5	5
	(Knob 40+30)	885940307..5	885940309..5	1	5	5
Length mm 75	(Knob 30+45)	885930457..5	885930459..5	1	5	5
	(Knob 45+30)	885945307..5	885945309..5	1	5	5
Length mm 80	(Knob 35+45)	885935457..5	885935459..5	1	5	5
	(Knob 40+40)	885940407..5	885940409..5	1	5	5
	(Knob 45+35)	885945357..5	885945359..5	1	5	5
Length mm 90	(Knob 30+60)	885930607..5	885930609..5	1	5	5
	(Knob 40+50)	885940507..5	885940509..5	1	5	5
	(Knob 45+45)	885945457..5	885945459..5	1	5	5
	(Knob 50+40)	885950407..5	885950409..5	1	5	5
	(Knob 60+30)	885960307..5	885960309..5	1	5	5
Length mm 100	(Knob 60+40)	885960407..5	885960409..5	1	-	1
Length mm 105	(Knob 50+55)	885950557..5	885950559..5	1	-	1
	(Knob 60+45)	885960457..5	885960459..5	1	-	1
Length mm 110	(Knob 50+60)	885950607..5	885950609..5	1	-	1
	(Knob 60+50)	885960507..5	885960509..5	1	-	1
	(Knob 80+30)	-	885980309..5	1	-	1
Length mm 120	(Knob 65+55)	885965557..5	885965559..5	1	-	1



R6

Code

Single
package

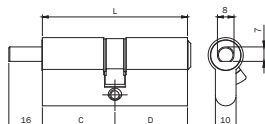
Multiple
package

Min. ord.

R6 EUROPEAN PROFILE cylinder with Ø 8X16 SHAFT prearranged for internal knob. Nickel-plated brass flat key with 6 pins.

Anti-drill device in the cylinder body. 30° DIN cam.

5 KEYS. CODE CARD. Fixing screw. (Key blank code: 020839).

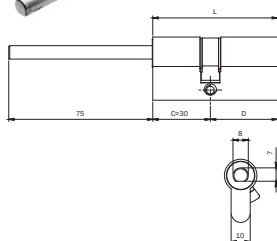


L	C + D	BRASS		NICKEL		
		Code	Code	1	5	5
Length mm 60 (Knob 30+30)		886930307..5	886930309..5	1	5	5
Length mm 61 (Knob 33+28)		886933287..5	886933289..5	1	5	5
Length mm 65 (Knob 30+35)		886930357..5	886930359..5	1	5	5
	(Knob 35+30)	886935307..5	886935309..5	1	5	5
Length mm 70 (Knob 35+35)		886935357..5	886935359..5	1	5	5
	(Knob 40+30)	886940307..5	886940309..5	1	5	5
Length mm 75 (Knob 30+45)		886930457..5	886930459..5	1	5	5
	(Knob 45+30)	886945307..5	886945309..5	1	5	5
Length mm 80 (Knob 35+45)		886935457..5	886935459..5	1	5	5
	(Knob 40+40)	886940407..5	886940409..5	1	5	5
	(Knob 45+35)	886945357..5	886945359..5	1	5	5
Length mm 90 (Knob 40+50)		886940507..5	886940509..5	1	5	5
	(Knob 45+45)	886945457..5	886945459..5	1	5	5
	(Knob 50+40)	886950407..5	886950409..5	1	5	5
	(Knob 60+30)	886960307..5	886960309..5	1	5	5
Length mm 100 (Knob 60+40)		886960407..5	886960409..5	1	-	1
Length mm 105 (Knob 50+55)		-	886950559..5	1	-	1
	(Knob 60+45)	886960457..5	886960459..5	1	-	1
Length mm 110 (Knob 60+50)		886960507..5	886960509..5	1	-	1

R6 EUROPEAN PROFILE cylinder with Ø 8X75 SHAFT prearranged for internal knob cylinder body 30 mm. Nickel-plated brass flat key with 6 pins.

Anti-drill device in the cylinder body. 30°DIN cam.

5 KEYS. CODE CARD. Fixing screw. (Key blank code: 020839).



L	C + D	BRASS		NICKEL		
		Code	Code	1	5	5
Body length mm 60 (knob 30+30)		8869D0307..5	8869D0309..5	1	5	5
Body length mm 65 (knob 30+35)		8869D0357..5	8869D0359..5	1	5	5
Body length mm 70 (knob 30+40)		8869D0407..5	8869D0409..5	1	5	5
Body length mm 75 (knob 30+45)		8869D0457..5	8869D0459..5	1	5	5
Body length mm 80 (knob 30+50)		8869D0507..5	8869D0509..5	1	5	5
Body length mm 90 (knob 30+60)		8869D0607..5	8869D0609..5	1	5	5
Body length mm 100 (knob 30+70)		8869D0707..5	8869D0709..5	1	-	1

FOR 3 KEYS VERSION REMOVE ..5 FROM THE CODE (e.g. 8869D0307).



R6 U.K. market

Code

Multiple
package
Single
package

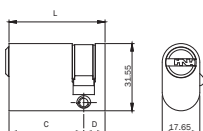
Min. ord.



R6 OVERSIZE OVAL SINGLE-PROFILE cylinder, U.K. market.
 Nickel-plated brass flat key with 6 pins. Anti-drill pin in the cylinder body.
 45° ISEO cam. **3 KEYS.**
 Fixing screw. (Key blank code: 020839).



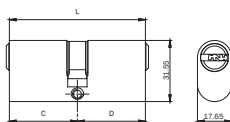
L C + D			1	10	10
	BRASS	NICKEL			
Length mm 45 (35+10)	881135107	881135109			
Length mm 50 (40+10)	-	881140109			



R6 OVERSIZE OVAL DOUBLE-PROFILE cylinder, U.K. market.
 nickel-plated brass flat key with 6 pins.
 Anti-drill pin in the cylinder body.
 45° ISEO cam. **3 KEYS.**
 Fixing screw. (Key blank code: 020839).



L C + D			1	10	10
	BRASS	NICKEL			
Length mm 60 (30+30)	881130307	881130309			
Length mm 70 (35+35)	881135357	881135359			
Length mm 80 (40+40)	881140407	881140409			





R6 U.K. market

Code

Multiple
package
Single
package

Min. ord.



R6 OVERSIZE OVAL SINGLE-PROFILE cylinder, U.K. market,
with internal flat knob and nickel-plated brass flat key with 6 pins.
Anti-drill pin in the cylinder body. 45° ISEO cam.

3 KEYS. Fixing screw. (Key blank code: 020839).



L C + D

Length mm 60 (30+30)

Length mm 70 (35+35)

Length mm 80 (40+40)

BRASS

NICKEL

887130307

887130309

1 10 10

887135357

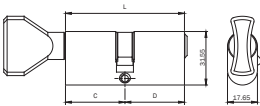
887135359

1 10 10

887140407

887140409

1 10 10





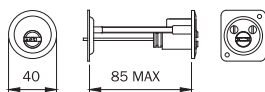
R6

Code
Single package
Multiple package
Min. ord.



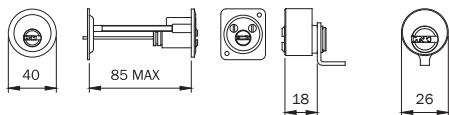
R6 EXTERNAL RIM CYLINDER to be applied on doors with a max thickness of 85 mm.
To be used with rim locks without external cylinder. 6-pin nickel plated brass flat key.
Plate and screws for inside fixing. **3 KEYS**. Fixing screw. (Key blank code: 020839).

BRASS	860000857	1	10	10
NICKEL PLATED BRASS	860000859	1	10	10



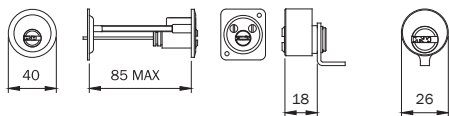
Pair composed of R6 INTERNAL cylinder to be applied to the lock and **EXTERNAL RIM** cylinder to be applied on doors with a max thickness of 85 mm.
To be used with rim lock Portoncino 4 series and electric locks 521* series latchbolt only.** 6-pin nickel plated brass flat key.
Plate and screws for inside fixing. **3 KEYS**. (Key blank code: 020839).
(For series 421-422-423-424-425-426-441-442-483-484-4510-5210-5213-5214)

BRASS	862100857	1	10	10
-------	------------------	---	----	----



Pair composed of R6 INTERNAL cylinder to be applied to the lock and **EXTERNAL RIM** cylinder to be applied on doors with a max thickness of 85 mm.
To be used with rim lock **Serie 5 52N* latchbolt only.**
6-pin nickel plated brass flat key.
Plate and screws for inside fixing. **3 KEYS**.
(Key blank code 020839).

BRASS	862107857	1	10	10
-------	------------------	---	----	----



R6 EXTERNAL FIXED Ø 26 cylinder to be applied on doors with a max. thickness of 50 mm. To be used with rim locks. 6-pin nickel plated brass flat key. Ø 26 tube and fixing screws.
3 KEYS. (Key blank code: 020839)

BRASS	862226507	1	10	10
-------	------------------	---	----	----

