

Concealed door closer with Cam-Motion® technology and small standard concealed guide rail G892 or standard concealed guide rail G893

Concealed door closer with Cam-Motion® technology and guide rail

### Product description

- Concealed door closer with Cam-Motion® technology and small standard concealed guide rail G892 or standard concealed guide rail G893
- Fulfills barrier-free building requirements (EA / CEN TR 15894)
- Certified in compliance with EN 1154, size 1-4
- Suitable for fire and smoke protection doors\*
- \* Additional verification of suitability required for the respective fire or smoke protection door
- For single action doors up to 1100 mm wide

### Overview of Advantages

- Can be used for left and right-handed doors
- Closing speed and latching speed adjustable from top facing regulating valves
- Built-in backcheck
- Thermodynamic valves for consistent performance
- Opening angle up to 120°
- Large range of applications
- Versions with 4 mm and 8 mm spindle extensions
- Standard colours: silver EV1

### Note

- Additional verification of suitability required for the respective fire or smoke protection door

### Characteristics of standard guide rail G892

- Small size guide rail, can be used with hold-open device and opening damper
- For standard applications
- Installation dimensions: see diagram

### Characteristics of guide rail G893

- Guide rail suitable for equipping with hold-open device and opening damper
- Installation dimensions: see diagram (dimensions in brackets)

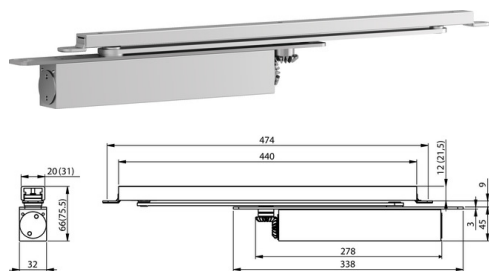
[view construction details](#)

### The advantages at a glance

Customer segment	Advantages
Project planners	Extensive range of uses: Fire and smoke protection doors as well as standard doors Fulfills barrier-free building requirements (EA / CEN TR 15894) Comprehensive functions, standard or optional
Builders	Quick and easy installation Quickly and easily adjustable Suitable for left and right handed doors
Trade	Reduced inventory costs due to modular product range One single product suitable for a large variety of mounting positions Complementary accessories available for the whole product range
User	Easier door opening and improved accessibility due to rapidly decreasing torque Largely unaffected by temperature fluctuations because of thermodynamic valves

### Technical data

Closing force	EN 1-4
Door width up to	1.100 mm
Suitable for fire doors	Yes
DIN direction	Left / right handed
Max. door opening angle	ca. 120°
Closing speed	Variable 120° - 7°
Latching speed	Variable 7° - 0°
Certified in compliance with	EN 1154
CE marking for building products	Yes
Length	278 mm
Height	45 mm



Dimensional drawings



# DC840

Concealed door closer with Cam-Motion® technology and small standard concealed guide rail G892 or standard concealed guide rail G893

Depth	32 mm
-------	-------

## Variants that can be ordered

Order number	Description
DC840-----EV1-	EN size 1-4, silver EV1
DC8404-----EV1-	EN size 1-4, spindle extension 4 mm, silver EV1
DC8408-----EV1-	EN size 1-4, spindle extension 8 mm, silver EV1

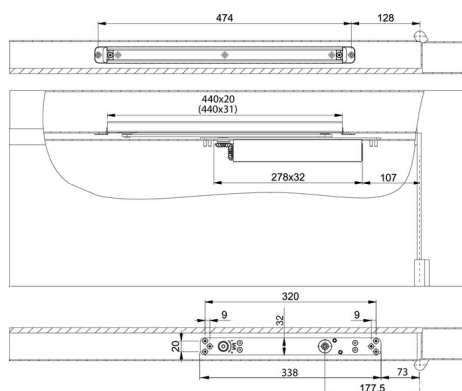
## Accessories/Individual parts

Order number	Product
DCG892-----EV1-	Concealed standard guide rail G892Silver EV1
DCG892-----XXXX	Concealed standard guide rail G892Customised finish
DCG893-----EV1-	Concealed guide rail G893Silver EV1
DCG893-----XXXX	Concealed guide rail G893Customised finish
DCA152-----	Hold-open device A152For Guide Rails G193/G195/G893
DCA153-----	Opening damper A153For Guide Rails G193/G195/G795/G893
DCA156-----	Hold-open device A156For Guide Rail G892
DCA157-----	Opening damper A157For Guide Rail G892
DCA162-----40	Mounting plate A162For Door Closer Models DC840/DC860, galvanised
DCA192-----	Fire protection A192 A192For DC840

Concealed door closer with Cam-Motion® technology and small standard concealed guide rail G892 or standard concealed guide rail G893

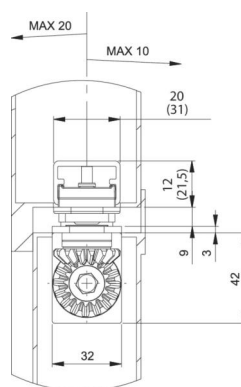
## view construction

### Installation dimensions

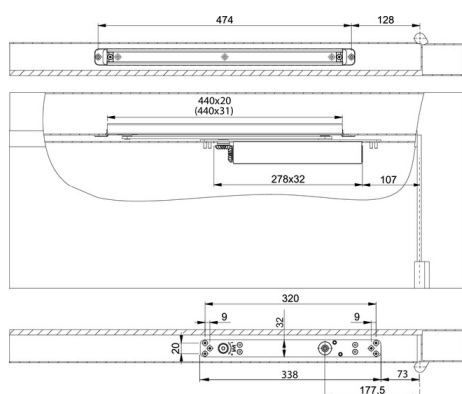


Right handed door shown in diagram

Left handed door is the reverse

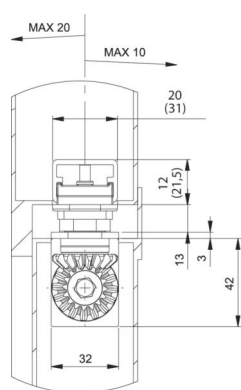


### Installation dimensions with 4 mm axis extension

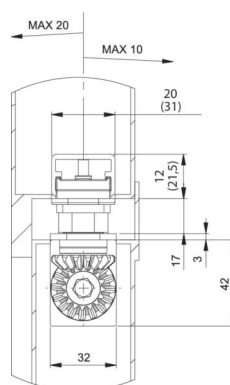
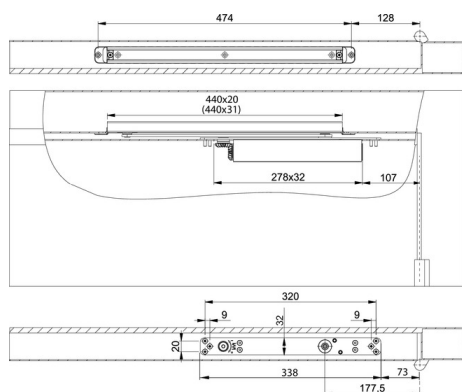


Right handed door shown in diagram

Left handed door is the reverse



### Installation dimensions with 8 mm axis extension



Right handed door shown in diagram

Left handed door is the reverse